

**JOHN
BURTON**
ADVOCATES FOR YOUTH

www.jbaforyouth.org

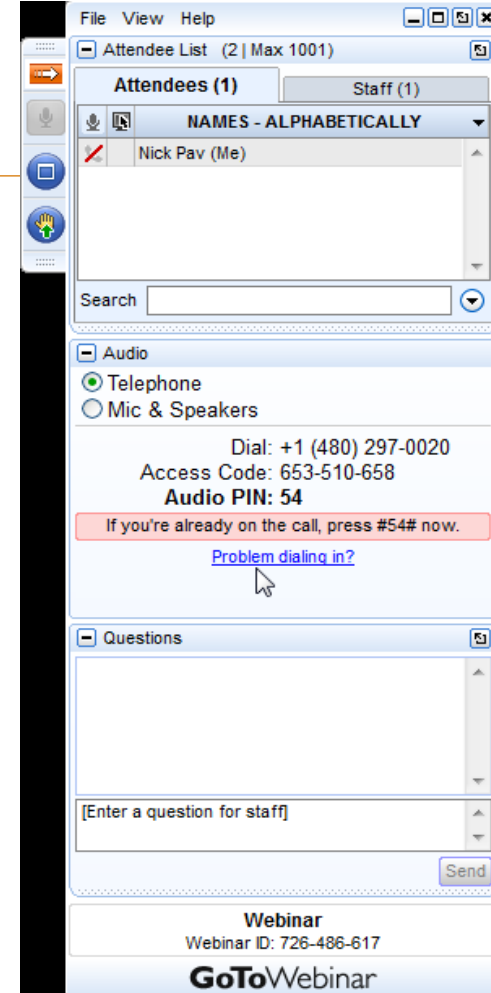
CAREER TECHNICAL EDUCATION:

Short-Term Programs into Living
Wage Employment

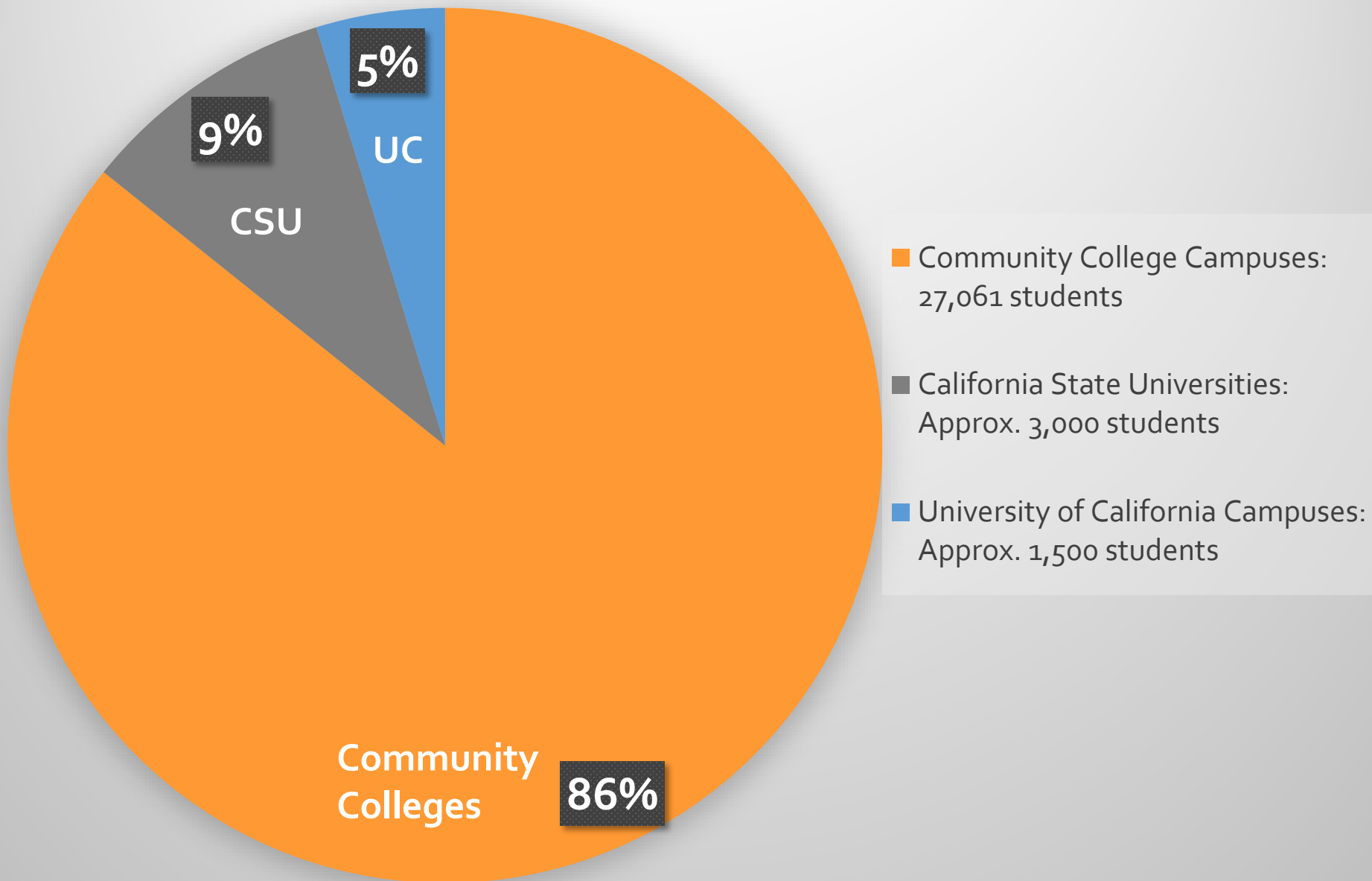
May 11, 2017

Information to Participate

- Call-in information
 - Phone number: (702) 489-0008
 - Access code: 928-441-384
- To submit live questions, click on the “Questions” panel, type your question, and click “send”
- Presentation materials and audio will be posted at www.jbaforyouth.org



Current & Former Foster Youth in College in California



Today's Presenter

Lynell Wiggins

*Strong Workforce Technical
Assistance Provider*

**California Community College
Chancellor's Office**

*Career Technical Education (CTE)
Counselor*

Pasadena City College

Task for Today



SB1456
Student
Success Act
of 2012



- What's going on in the California Community Colleges
- "Just in Time" vs. "Just in Case" Matriculation
- What do I need to know to help my students get into a community college?



Seymour-Campbell Student Success Act of 2012

Gov. Jerry Brown signed into law the Student Success Act of 2012, the legislative cornerstone of a California Community Colleges reform initiative aimed at **improving educational outcomes** for students and **better preparing the workforce** needed for California's changing economy.

- **Goal:** Help more California community college students reach their goal of earning a degree, certificate, career advancement or transferring to a four-year institution.



Use of \$200M Strong Workforce Program More and Better...

- Increase quantity of CTE
- Improve quality of CTE

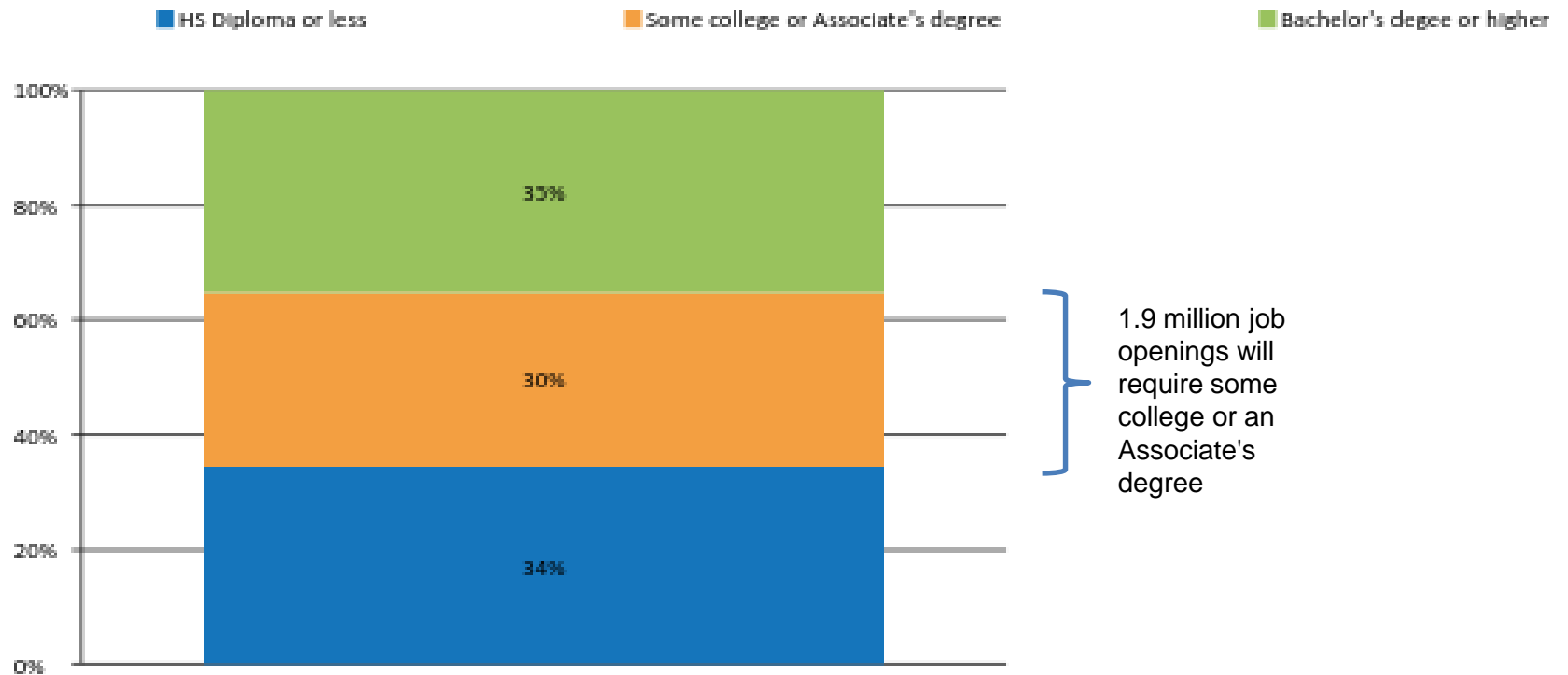


Courses, programs, pathways,
credentials (licensure), certificates,
degrees

Requirement: labor market demand!

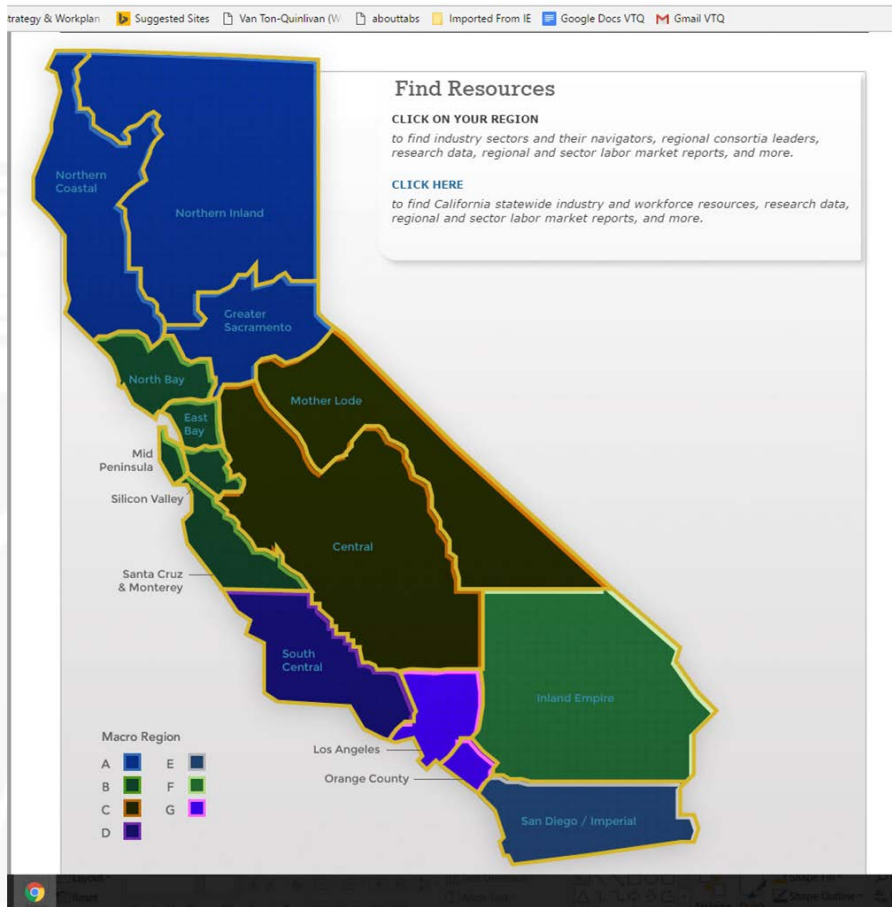


California's Job Openings by Education Level 2015-2025



Data source: Georgetown University Center on Education and the Workforce, "Recover: Job Growth and Education Requirements Through 2020," State Report, June 2013.
Analysis: Collaborative Economics





CALIFORNIA

- 113 community colleges
- Regional economies
 - Differing labor market needs
 - Industry sector
 - Guided pathways
- Student workforce outcomes



CCC Educational Goal Options

1. Prepare for a new career (Skill Attainment)
2. Advance in current job/career (Skill Attainment)
3. Discover/develop career interests (Core Task)
4. Obtain two-year vocational degree without transfer ** (Skill Attainment and Core Task)
5. Obtain non-vocational degree without transfer ** (Skill Attainment & Core Task)
6. Obtain a vocational certificate without transfer
**Major _____ (Skill Attainment & Core Task)



CCC Educational Goal Options (Cont.)

8. Obtain a Bachelor's degree after Associate degree **

(Skill Attainment & Core Task)

9. Obtain a Bachelor's degree without Associate degree **

(Skill Attainment & Core Task)

10. Maintain license * (Skill Attainment/Enhancement)

11. Improve basic skills (English, Reading, Math)

(Skill Attainment & Core Task)

12. Complete credits for HS diploma or GED (Skill Attainment)

13. Personal Development * (Skill Attainment & Core Task)

14. Undecided on goal (Skill Attainment & Core Task)



CCC Educational Goal Options (Cont.)

15. To move from non-credit coursework to credit coursework (**Skill Attainment, Core Task, Pathways**)
16. 4-year college student taking courses to meet 4 year requirements*

***Educational Goals that do not require Matriculation: 10, 13, and 16 (Exception: All high school seniors should be required to matriculate.)**

****Eligible Educational Goals for Financial Aid: 4, 5, 6, 8, 9 require you to complete Matriculation.**



Student Services

- [California Promise](#)
- [California Work Opportunity and Responsibility to Kids \(CalWORKs\)](#)
- [Cooperative Agencies Foster Youth Educational Support \(CAFYES\)](#)
- [Cooperative Agencies Resources for Education \(CARE\)](#)
- [Disabled Student Services and Programs \(DSPS\)](#)
- [Early Assessment Program \(EAP\)](#)
- [Early Childhood Education / Child Development](#)
- [Extended Opportunity Programs and Services \(EOPS\)](#)
- [Foster and Kinship Care Education \(FKCE\)](#)
- [Student Equity](#)
- [Student Financial Assistance Programs \(SFAP\)](#)
- [Student Success and Support Program \(SSSP\)](#)
- [Transfer and Articulation](#)
- [Veterans Services](#)



Our new reality in the CCC...

- High School and Community College partnerships are the key to helping students reach readiness standards that will excite business and industry; as well as state legislators
- College is a necessity if you are to be prepared for a living wage job
- Counselors and Student Services professionals will require a reboot toward placing transfer in its proper place to increase individuals sub-baccalaureate credential attainment
- Flipping the college decision-making paradigm advances the cause of helping adolescents transition toward adult decision-making



Who's Up Next

- Millennials account for 37 percent of California's workforce. Each year, California **loses \$219 million from high young-adult unemployment** mainly due to lost tax revenue. To the extent that Millennials struggle economically, the whole state suffers (2015).
- Young Californians are **unemployed at a much higher rate** than the national average (17.6% compared to 4.9%) and the situation is especially difficult for young Latino and African American Californians.
- Although we're seven years out of the Great Recession, this generation is struggling more than any other age group to get back on its feet. They have a **negative savings rate of 2%** and at the same time the cost of college has exploded.
- Many in their generation are earning wages that are **lower** than their parents and often walking out school with debt. **The average person leaves college with \$33,000 in debt**, starting at a disadvantage.



Career Stratagem: Calling All Pathway Guides

re | <https://www.merriam-webster.com/dictionary/stratagem>



SINCE 1828

stratagem

GAMES | BROWSE THESAURUS | WORD OF THE DAY | VIDEO | WORDS AT

DICTIONARY

THESAURUS

stratagem

noun | strat·a·gem | \ˈstra-tə-jəm, -jəm\

Popularity: Top 40% of words

Examples: STRATAGEM in a sentence ▼

Editor's note: Did You Know? ▼

Tip: Synonym guide ▼

Definition of STRATAGEM

- a** : an artifice or trick in war for deceiving and outwitting the enemy

b : a cleverly contrived trick or scheme for gaining an end
- : skill in ruses or trickery



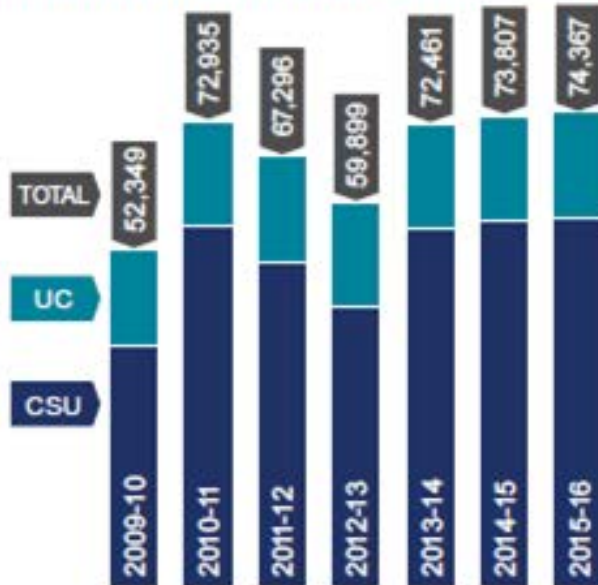
CALIFORNIA COMMUNITY COLLEGES

What We Learned From The Field?

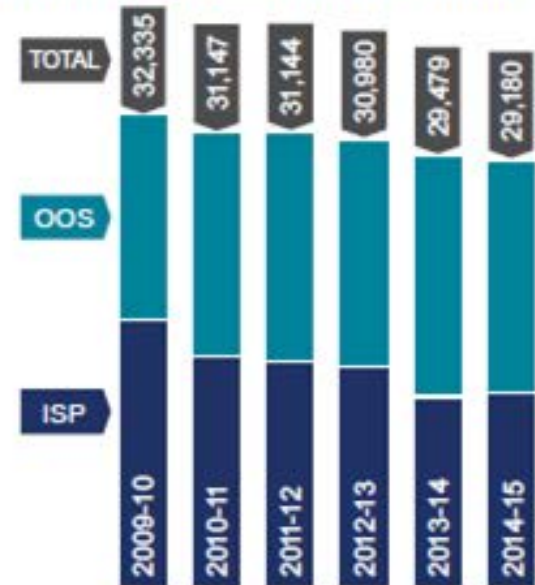
- **Skills gap** and little understanding for how to navigate careers
- In many cases, we heard **higher education isn't enough to prepare our generation for today's landscape. More job-training programs are needed** for our generation to move past that entry-level job.
- There was a **shared fear** that **college costs** will prevent them from pursuing post-secondary degrees they consider critical.

Transfer Reality

ANNUAL NUMBER OF COMMUNITY COLLEGE TRANSFERS TO CALIFORNIA STATE UNIVERSITY (CSU) AND UNIVERSITY OF CALIFORNIA (UC) SYSTEMS



ANNUAL NUMBER OF COMMUNITY COLLEGE TRANSFERS TO IN-STATE PRIVATE (ISP) AND OUT-OF-STATE (OOS) INSTITUTIONS*



*Transfers to California State University and University of California systems not included.

From the 2016 State of the System Report, p. 13



Consider This Completion Approach for Student Services
-Adopting Adult Decision Making Strategies-

<https://vimeo.com/174407736>





CALIFORNIA COMMUNITY COLLEGES

Doing What MATTERS™

FOR JOBS AND THE ECONOMY



**California
Guided Pathways**



CALIFORNIA COMMUNITY COLLEGES

**Task Force on
WORKFORCE**

JOB CREATION AND A STRONG ECONOMY



- Learning from the Past
 - Not just learn, build
- Navigating the Present
 - Website, catalog
 - Who's in the STEAM pathway?
 - Who's in the ECE/Child Development pathway?
 - Who's in the CTE Teacher path?
- Envisioning Tomorrow
 - Visible, clear, and connected
 - What is the destination?



CALIFORNIA COMMUNITY COLLEGES

Pillar 1: Clarifying the Path

The 4 Pillars

- 1. Clarify paths to student end goals**
2. Help students choose and enter a pathway
3. Help students stay on path
4. Ensure that students are learning



Strong Workforce

CLARIFY THE PATH

Begin your career search with the end in mind

- What's the job or career area?
- What's the projected salary?
<http://livingwage.mit.edu/>
- How long will it take me to get there?
-What training, credentials, and jobs I attempt along the way?



Strong Workforce

Produce highly-skilled and knowledgeable workforce

- Through data informed regional coordination
- Increase the quantity and ensure workers are qualified
- Assist business and industry with preparing workers with hard and soft skills
- Meet local workforce demand

ENSURE LEARNING



Pet Peeve 101: A CTE Counselor's Perspective

- Proponent of transfer; within context
- Establish a career interest area and validate it with career inventories and skills assessment
- Take Major (towards certificate, associates, or transfer), General Education, and Elective Coursework
- What do students want to know?



Students want to know

1. What are my career options?
2. What are the education paths to those careers?
3. What will I need to take?
4. How long will it take and how much will it cost?
5. How much financial aid can I get?
6. Will my credits transfer?



Community College Research Center



What's *Get Focused...Stay Focused!*™ ?

The *Get Focused...Stay Focused!*™ (GFSF) Initiative developed through Santa Barbara City College's Dual Enrollment department is a scalable, cost-efficient program that promotes high school graduation, post-secondary completion and successful entry into the workforce.

Current Challenges

- ❗ **Low ratio of counselors** to students - currently between 1:400 to 1:1800.
- ❗ **Not all students can get access** to counseling services.
- ❗ Existing educational planning processes are often **short-sighted** and **not career-focused**.
- ❗ **Students not completing their education programs** due to lack of guidance and making uninformed choices.

Get **Stay Focused!**



Find Out More

GetFocusedStayFocused.org
AcademicInnovations.com/gfsf
My10YearPlan.com

High Schools - Why GFSF?

- ✓ A whole school effort that reaches **every student**.
- ✓ Help students develop meaningful **10-Year Career & Education Plans** that are **Skills-based**.
- ✓ 10-Year Plans are **online and easily accessible** to all on-campus professionals for counseling and academic coaching.
- ✓ Ensure students have identified **informed** choice of major or program of study before they graduate.

All incoming 9th grade students take a standards-based, comprehensive guidance dual enrollment course (DEFT) that culminates with an online 10-year Career & Education Plan.

During the 10th, 11th, and 12th grade, using the hybrid GFSF Follow-up Modules, students update their online 10-year Career & Education Plan as they expand their career and education options.

Students enter college with informed choices of major and carefully considered career goals. They are encouraged to keep updating their online 10-year Plans in their College Success course and to share the plans with their instructors to better personalize their class assignments and co-curricular activities.

Results:

Higher completion rate of education programs. Students are ready for entry into a highly competitive workforce upon graduation.



9th Grade

10th Grade

11th Grade

12th Grade

College/Post Secondary

Career

Pillar 2: Help Students Choose and Enter a Pathway

The 4 Pillars

1. Clarify paths to student end goals
- 2. Help students choose and enter a pathway**
3. Help students stay on path
4. Ensure that students are learning



Strong Workforce

Broaden & Enhance Career Exploration

- Early on-boarding to a career
- Curricular Alignment / Dual Enrollment
- Business and Industry offer consultation on skills/training needed for careers

ENTER THE PATH





1. Explore Careers

Find a career that motivates you.

- [Take the Career Assessment](#)
- [Explore Careers](#)
- [View Potential Wages](#)

2. Choose a College

Discover a college that will help you reach your goals.

- [About the Community Colleges](#)
- [Find a College](#)
- [All Community Colleges](#)
- [See all...](#)

3. Apply for College

Get your application started and learn about priority registration.

- [Begin Application](#)
- [What is Priority Registration?](#)
- [Orientation](#)
- [See all...](#)

4. Pay for College

Apply for financial aid.

- [Eligibility](#)
- [Get Ready to Apply](#)
- [Apply Now](#)
- [See all...](#)





Welcome to Career Coach

Discover majors and in-demand careers and education based on your interests!

Take Career Assessment

Take a Career Assessment to learn about yourself and Career Coach will give you career suggestions based on your interests.

[Take the Assessment](#)

Explore Careers

Browse careers and we will give you relevant data on wages, employment, and the training you need.

[Explore Careers](#)

Explore Programs

Explore the available programs that lead to the career you want.

[Explore Programs](#)

Have a military background?

Find your Military Occupation Code to find similar civilian careers. [Get Started](#)





Select a Program of Study ▼

Salary Surfer

As students and their families make important decisions about investing their time and money in pursuing a college education, the California Community Colleges Chancellor's Office is making available for the first time comparative information about the earnings of recent graduates who received an award in a specific program area at California community colleges.

Pillar 3: Keeping Students on the Path

The 4 Pillars

1. Clarify paths to student end goals
2. Help students choose and enter a pathway
- 3. Help students stay on path**
4. Ensure that students are learning



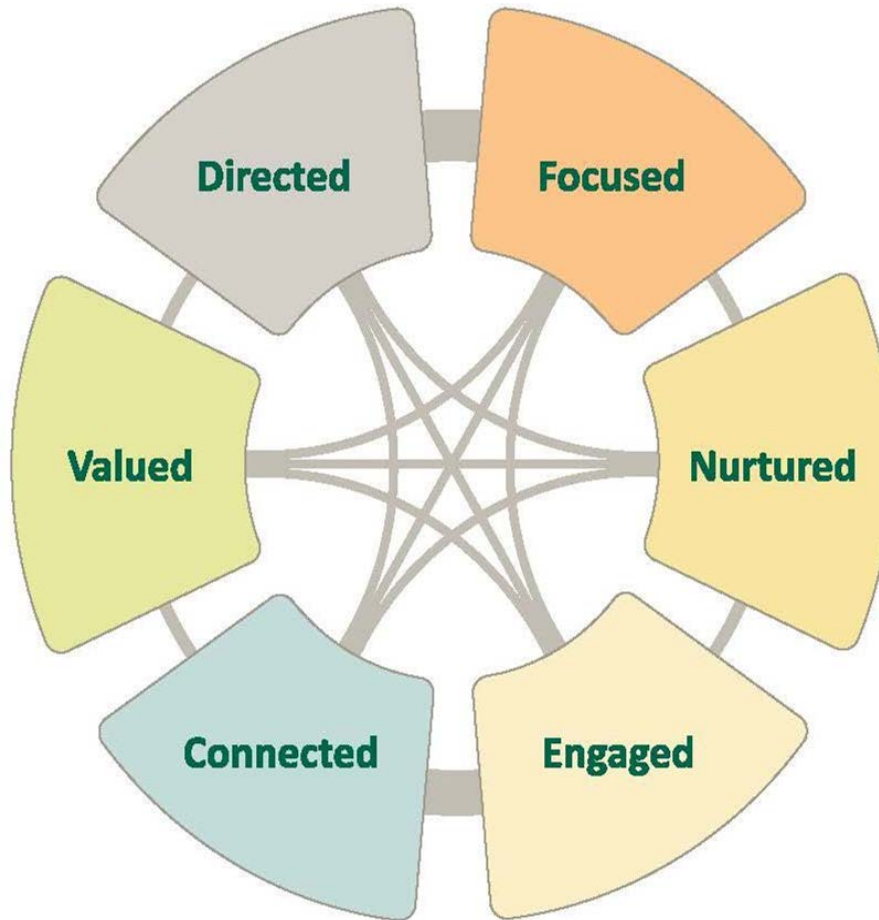
Strong Workforce

Encourage the Development of Employability Skills In and Out of the Classroom

- On-going Employment
- Work Based Learning
- Apprenticeship
- Internships
- Contextualize learning
 - Develop applied English and math courses that meet both CTE and Associate degree requirements
 - Embed career related content into GE courses



The Six Success Factors and The Four



By Dr. Darla M. Cooper
Director, Research and
Evaluation The RP Group



Six Success Factors

- **Directed:** Students have a goal and know how to achieve it
- **Focused:** Students stay on track—keeping their eyes on the prize
- **Nurtured:** Students feel somebody wants them to succeed as a student and helps them succeed



Six Success Factors (*cont.*)

- **Connected:** Students feel they are part of the college community
- **Engaged:** Students actively listen and participate in class and are involved in extracurricular activities
- **Valued:** Students' skills, talents, abilities and experiences are recognized; they have opportunities to contribute on campus and feel their contributions are appreciated



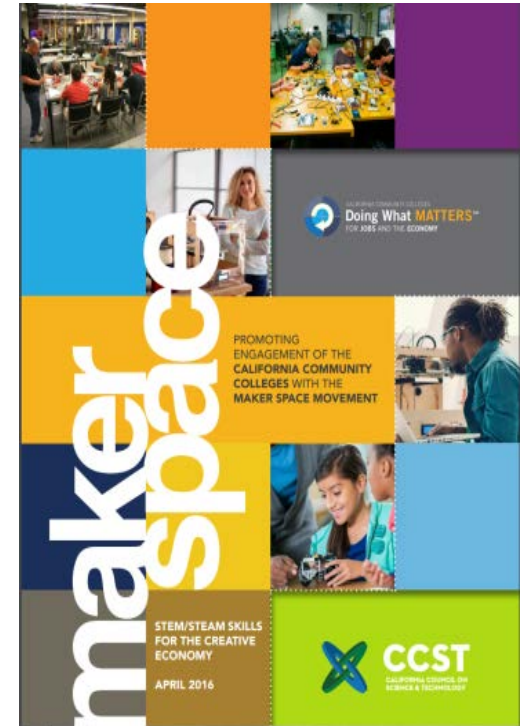
Innovations-at-scale....to benefit students



New World of Work



- Top Ten
21st Century Skills
- Adaptability
 - Analysis/Solution Mindset
 - Collaboration
 - Communication
 - Digital Fluency
 - Entrepreneurial Mindset
 - Empathy
 - Resilience
 - Self-Awareness
 - Social/Diversity Awareness



Question & Answer

CLICK ON THE "QUESTIONS" PANEL, TYPE IT AND HIT "SEND"